



# intAct GEL-Power

Sealed GEL battery with grid plates | electrolyte gel-bonded | filled and charged | absolutely maintenance-free

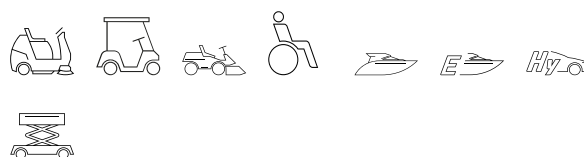
Art.No.

## GEL-69

Volt	12V
Capacity	69 AH (c5), 78 AH (c10), 86 AH (c20)
CCR -18°C (EN)	-
Electrolyte	diluted sulphuric acid
Electrolyte density	1,28 +/- 0,01 Kg/l (25° C)
Size (LxWxH)	250 x 150 x 400 mm
Weight	31,5 kg
Pos. of Terminal	1
Terminal	F-M8
Base plate	-



### Usage

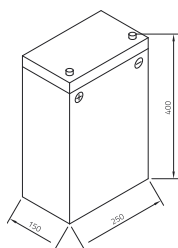


## Minimal maintenance during use

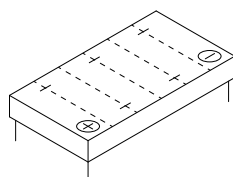
Perfect for increased demand in terms of performance and availability associated with electric vehicles for commercial, leisure and travel purposes. Reliable in shift operation and maintenance-free. Our recommendation when a leak-proof traction battery is required.

- » **For medium to heavy cyclical use.** 400 - 700 cycles according to IEC 254-1.
- » **Longer service life than flooded lead-acid batteries.**
- » **High vibration resistance.**
- » **Low self-discharge.**
- » Available in **4-volt, 6-volt and 12-volt versions.**
- » **VRLA battery with gas recombination and safety valves,** refilling is neither possible or necessary.
- » **Sealed GEL battery with grid plates.**

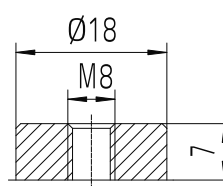
Size



Pos. of Terminal 1



Terminal F-M8



Base plate -

As of 02.04.2024